

**World Leader in Sophisticated Packaging Systems**



**MSD-WA** Manual Side Drive Water Activated

**series overview**

The BestPack® MSD22-3WA Series are water-activated (gummed tape), operator fed, adjustable carton-sealing machines designed to cater to the needs of general and heavy duty uniform closure applications.

This machine comes with a pop-out tape head. The two side belts are driven by two electric 110V UL-approved motors. These units are also available in Stainless Steel.

**major features**

- 3" water-activated pop-out tape heads
- Two Side Belts
- Telescopic Mast Design
- Adjustable Bed Height 25.5" to 30.00"
- Width/Height Adjustment either side of machine
- Heavy Duty Frame
- UL Approved Electrical Parts
- Designed for uniform applications

**standard features**

- Exclusive Pop-out Water Activated Tapehead
- Operation Manual and Spare Parts Kit
- Top Carton Compression Unit
- 3" Tapehead



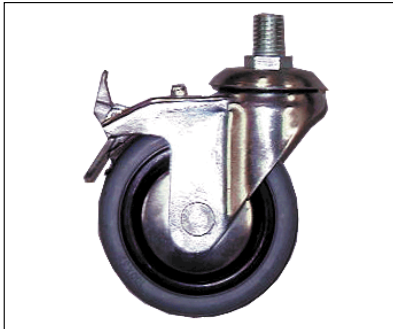
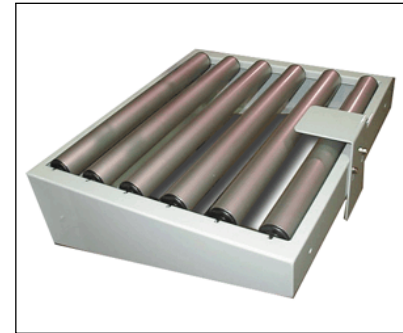
**PACKAGING**

888-922-1622

WWW.IPACK.COM

**World Leader in Sophisticated Packaging Systems****optional features**

- *Motorized Height and/or Width Adjustment*
- *Interlock Safety Gates*
- *Stainless Steel*

**Locking Castors****Infeed/Exit Conveyor w/ Stabilizer****machine & carton specifications**

- *Power Requirements: 110 Volts 60 Hz*
- *Speed: Up to 5-10 cartons/minute*
- *Tape Head: Standard: 3"*
- *Requires Dry Air*

**series comparison table**

Model	Machine Size	Carton Range	Cartons/Min.	Shipping Weight (lbs.)
MSD 22-3WA	(56.7") x (35.0") x (79.4")	(7.9" - unlimited) x (5.1" - 20.8") x (7.0" - 20.5")	5-10	528 (machine) 75 (pallet) 40 (tri-wall)
MSDL 22-3WA	(67.1") x (35.0") x (79.4")	(7.9" - unlimited) x (5.0" - 20.5") x (4.0" - 20.5")	5-10	600 (machine) 90 (pallet) 50 (tri-wall)

\* All specifications capable of customization

\*\*With skid plates

**PACKAGING****888-922-1622****WWW.IPACK.COM**